



YOUR IPTV & OTT SOLUTIONS EXPERTS FOR TELECOM MARKET



BE ALWAYS CONNECTED WITH YOUR CUSTOMERS EXPECTATIONS.



ABMWARE gives access to the unlimited possibilities given by the Connected Technology, to your customer's, by means of the **OXY** solution. This solution is designed around several modular blocks like the information Portal, the live Television and Radio services, the time-shifted Television (Catch-up and Start-over), the On-Demand services (VOD), ...

- Middleware
- IPTV & OTT solutions
- Multi-screen
- System Integration
- User Experience
- Partnerships
- Set-Top-Box
- Television

“ *ABMWARE brings innovative services able to answer customers and operators needs in a connected world with a unique User Experience* ”

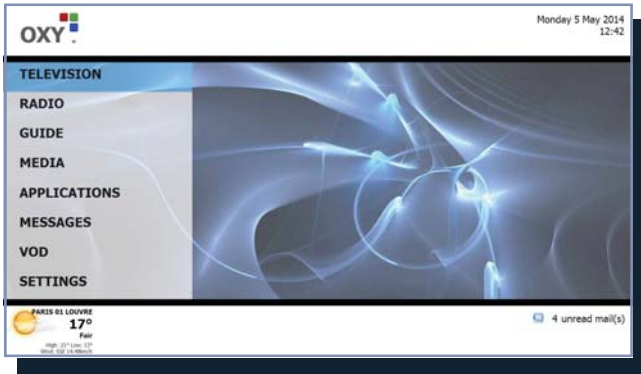
ABMWARE is a Solution Provider able to define and deploy a complete End-to-End solution. With a proven experience in the Digital TV world, **ABMWARE** is able to anticipate your needs to bring OTT and IPTV services to your customers' through its **OXY** Middleware solution. **OXY** is based on two main products **OXYBO** (Back-Office) and **OXYTEL** (Telco Front Office).



14, rue du Port - CS 70062
92024 NANTERRE CEDEX (FRANCE)

<http://www.abmware.com/contacts@abmware.com>

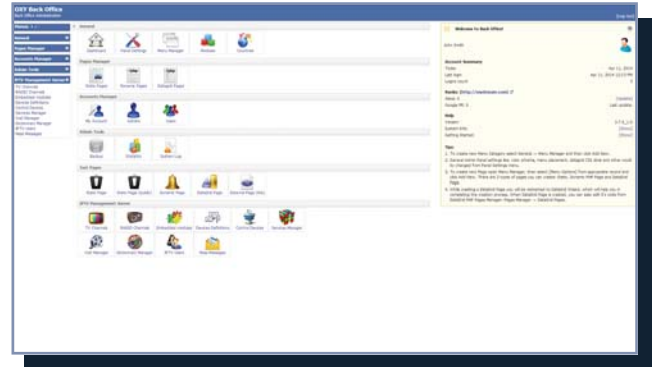
Please contact us for a free trial or consultation ▶▶▶



OXYTEL (Telco Front Office), the modular solution covering the services you targeted to your customers :

- Linear TV and Radio
- On Demand services (VOD, MOD)
- Time-shifted services (Catch-up, Start-Over)
- EPG
- Messages
- Multi-languages
- Settings

OXYTEL is easily manageable from the Back Office tool **OXYBO**. This tool offers a modular configuration to extend or reduce functionalities (service, menu, submenu, ...), a specific or local customization (languages, channels, ...) to monetise the offered services to your customer.



OXY, the modular and scalable solution composed of **OXYTEL** and **OXYBO** products, supports multi-screen mode on every kind of devices like :

- Television set
- Set-Top-Box
- Mac & PC
- Smartphone
- Tablet

ABMWARE built partnerships to ensure the best integration of its **OXY** solution.

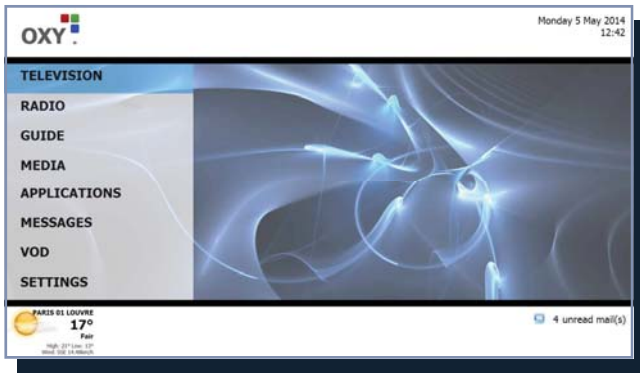
Please contact us for a free trial, webinar, remote demo or online tutorial

ABMWARE
Advanced Broadcasting Media for Wide AREa network

14, rue du Port - CS 70062
92024 NANTERRE CEDEX (FRANCE)

<http://www.abmware.com/>
contacts@abmware.com





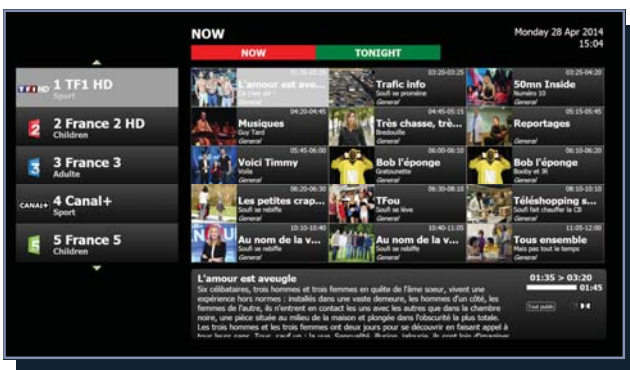
PORTAL (OXYTEL)

Synthetic with an easy navigation supporting multi-languages, it provides the link between you and your customers with the summary of events and promotions.



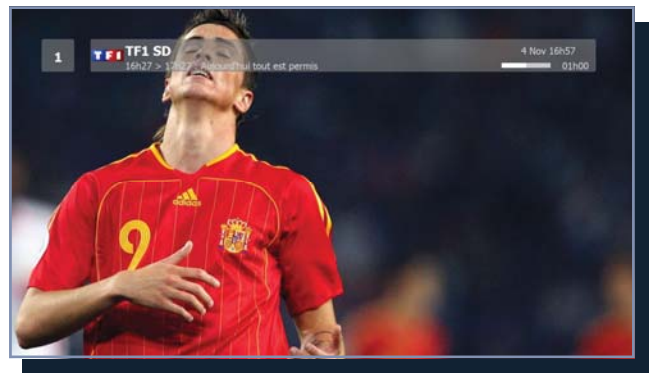
ON-DEMAND SERVICES (OXYHOSP)

The list of video programs available by your client from his device(s).



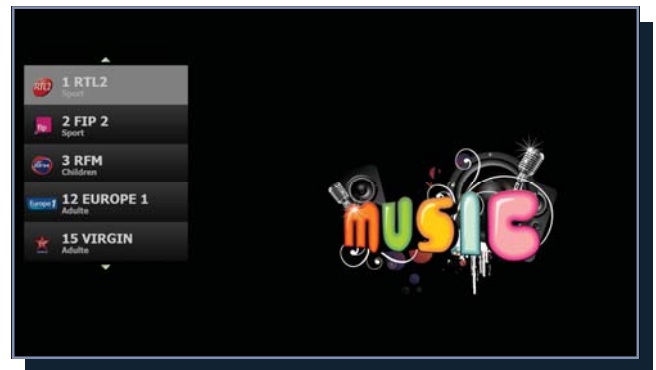
PROGRAMS GUIDE (OXYTEL)

Provides information on current programs and evening.



TELEVISION (OXYTEL)

Easy configurable Television bouquets to best satisfy customer needs from the Back-Office tool (OXYBO). It provides an integrated programs guide providing present elements and follow, as on the day.



RADIO (OXYTEL)

Easy configurable Radio local or foreign bouquets to best satisfy customer needs from the Back-Office tool (OXYBO).



ABMWARE
Advanced Broadcasting Media for Wide AREa network

14, rue du Port - CS 70062
92024 NANTERRE CEDEX (FRANCE)

<http://www.abmware.com/>
contacts@abmware.com

Please contact us for a free trial, webinar, remote demo or online tutorial

